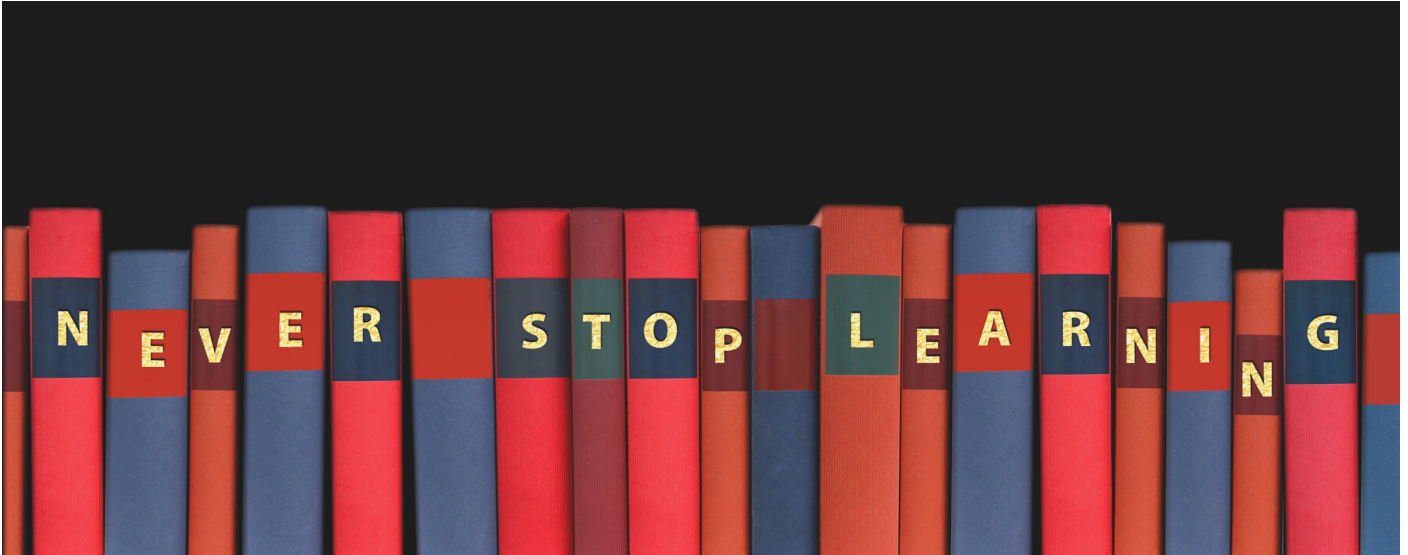


CAREER PLANNING

SPRING 2022



COURSE HIGHLIGHTS:

Career Planning
Student Clubs
International Programs
Soft Skills
Value of Networking
Communication Skills
CV Preparation
Interview
Entrepreneurship
Digital Identity

WELCOME MESSAGE

Dear Students,

Career planning is not just about finding a job after graduation. It is a recurring process that students should utilize at any time throughout the degree and professional life. Therefore, students should be encouraged to begin their career development in their first year.

In that sense, we are pleased to announce this new "Career Planning" course for first-year METU students.

This course aims to help you get the greatest benefit out of your undergraduate program and the time you spend at university, increase your awareness of expectations in professional life, introduce to you university units that will support you throughout your career path, and support your personal development. We all hope that you will enjoy and benefit from this course and we wish that all your career dreams will come true.

On behalf of all BA100 instructors,

Prof. Y. Eren Kalay, Course Coordinator

GRADING

Class Participation: 40% (Min. 75 % attendance is required)

Homework: 60%

Students are expected to complete the following tasks:

1. Prepare a letter of intent along with a traditional or video CV (due date: April 1st, 2022)
2. Write an essay to explain your 5-year future plans. (due date: June 17th, 2022)

Self Study Assignments:

1. Visit METU Career Fair (March 28th - April 1st 2022)
2. Create a 30-second elevator pitch.
3. Make an interview with METU alumni about career experiences.
4. Create an electronic portfolio.

TIMETABLE

Wednesdays 17:40-18:30 (**Live online**)

Links for each lecture will be provided through odtuclass(<https://odtuclass.metu.edu.tr/>)

CONTACT

E-mail: ba100@metu.edu.tr

Phone: (0312) 210 4129

<https://kpm.metu.edu.tr/career-planning/>

"Please attend the first lecture for further details"



INFORMATION FOR STUDENTS WITH DISABILITIES

To obtain disability related academic adjustments and/or auxiliary aids, students with disabilities must contact the course instructor and the METU Disability Support Office as soon as possible. If you need any accommodation for this course because of your disabling condition, please contact me. For detailed information, please visit the website of Disability Support Office:

<http://engelsiz.metu.edu.tr/>

ACADEMIC HONESTY

The METU Honour Code is as follows: "Every member of METU community adopts the following honour code as one of the core principles of academic life and strives to develop an academic environment where continuous adherence to this code is promoted. The members of the METU community are reliable, responsible and honourable people who embrace only the success and recognition they deserve, and act with integrity in their use, evaluation and presentation of facts, data and documents."



WEEKLY PROGRAM

WEEK 1: 9 March 2022/17.40-18.30



Introduction of Career Planning Course and METU Career Planning Center

Lecturer: Prof. Y. Eren Kalay (Course Coordinator /ODTÜ KPM)

Details: Course aim and scope; introduction of the career center services and career center's online platform. The team members of METU Career Planning Center introduce themselves.

WEEK 2: 16 March 2022/17.40-18.30



Soft skills (that employers look for)

Lecturer: Ülkü Önder (ODTÜ KPM)

Details: What are the soft skills that are important in recruitment and success in business life? Can they be learned or improved? What can be done on this subject during university years?

WEEK 3: 23 March 2022/17.40-18.30



Effective CV Preparation

Lecturer: Ülkü Önder (ODTÜ KPM)

Details: "Why should I hire you?", "What are the reasons why I chose you over other candidates?". If your CV answers these questions, it is likely that it was prepared correctly. Information about the titles and sequences that should be in a correctly prepared CV will be revealed.

WEEK 4: 30 March 2022/17.40-18.30



METU Student Clubs

Lecturer: Prof. Gaye Teksöz (Advisor to the President / Dean of Students)

Details: In this lecture, we will talk about METU student clubs. At METU, almost 100 student clubs organize more than 1,000 scientific, professional, intellectual, or artistic events per year. With these activities, students learn new things and have the opportunity to develop their soft powers. Being involved in these clubs can profoundly impact your future career in a hugely positive way. In that sense, we will talk about why you should join a student organization during your undergraduate education.

WEEK 5: 6 April 2022/17.40-18.30



How to prepare for your future career?

Lecturer: Deniz Dönmez (ODTÜ KPM)

Details: When you think about preparing for your future career, what comes to your mind? In this course week, you will learn about some tips and advice that can help you better understand what you should do to build your future career. You will also learn how to get out of your comfort zone and take advantage of all the resources that you already have.

WEEKLY PROGRAM

WEEK 6: 13 April 2022/17.40-18.30



Internationalize Yourself

Lecturer: Dr. İbrahim Yorgun (METU International Cooperations Office)

Details: Career life suggests that experience is one of the top priorities in finding a job or starting a business as an enthusiastic and dedicated entrepreneur. However, experience with an international dimension is regarded *crème de la crème*. This type of experience is highly prioritized not only in the private sector but also in the public one including higher education. Such is the vision of this session and it will focus on potential mechanisms and programs which are available to the undergraduate students at METU so that they finish their degrees with some international experience.

WEEK 7: 20 April 2022/17.40-18.30



Introduction to Entrepreneurship and Opportunities at the METU Ecosystem

Lecturer: Assoc. Prof. Elif Sürer (Multimedia Informatics, GİMER(Entrepreneurship Research Center))

Details: Entrepreneurship is an essential asset in numerous domains, including engineering, game technologies, and health. In this lecture, the fundamentals of entrepreneurship will briefly be introduced, followed by the opportunities at the METU ecosystem—research centers, incubation centers, new and international entrepreneurship courses, international projects, hackathons, and students clubs.

WEEK 8: 27 April 2022/17.40-18.30



What will happen in the future and how to benefit from it

Lecturer: Jason Steinberg (Department of Modern Languages)

Details: We have entered a period of history that is increasingly volatile, and this volatility will remain for the rest of your adult life. It will impact the career that you pursue, the place that you choose to live, and your friends and family. Bringing a historical perspective, we will frame the "big picture" of the current era in an attempt to identify risks and opportunities in your personal planning.

WEEK 9: 11 May 2022/17.40-18.30



Entrepreneurship

Lecturer: Serdar Alemdar (METU Alumni / General Manager, METU Technopolis)

Details: We will discuss about entrepreneurship as a career option for students. METU & METU Technopolis offers variety of programs addressing undergraduate students in order to inspire and enable founder teams to learn and develop entrepreneurial skills. Finally we will discuss professional career option startups which could be best of both worlds for many people.

WEEKLY PROGRAM

WEEK 10: 18 May 2022/17.40-18.30



Designerly Way of Thinking and Thinking the Design

Lecturer: Prof. Arzu Gönenç Sorguç (Department of Architecture/METU Design Factory)

Details: Design, in general, is an act of problem-solving, however, solving a problem does not mean that you are designing. Problem-solving requires vertical thinking, design on the other hand requires lateral thinking which helps to see the “solutions” that no one can see. Designing is a creative process, novelty is in its essence. Today, with the advances in technology and computational tools, design becomes very interdisciplinary and designers should also orchestrate data, use technology, and should be good team players. A way to achieve this is to develop a new mindset and design thinking is an approach to develop such thinking skills and help you think designerly.

WEEK 11: 25 May 2022/17.40-18.30



New Possibilities and Opportunities of Metaverse as a Future Planning

Lecturer: Dr. Ozan Yavuz (ODTÜ KPM)

Details: The shift toward the virtual world of the metaverse is already beginning to take place. This new world has begun to offer us new possibilities in quite different fields. Although it seems a bit scary to adapt to this world, many companies, freelancers, and artists have already started to modify themselves in this field. New career and job descriptions specific to the field started to give some clues like Ecosystem Developer, Metaverse Storyteller, and NFT Domain Consultant. This talk briefly will be on the new possibilities and opportunities in the virtual world and the metaverse from fields of social sciences, art, and engineering.

WEEK 12: 1 June 2022/17.40-18.30



My Story, My University 😊

Lecturer: Mete Uslukılıncı (METU Alumni / General Manager, Dyson Turkey)

Details: In this lecture, we will host our alumni (BA 2000) Mete Uslukılıncı. He is the general manager of Dyson Turkey. He will share his valuable experiences and best career advice with our students.

WEEK 13: 8 June 2022/17.40-18.30

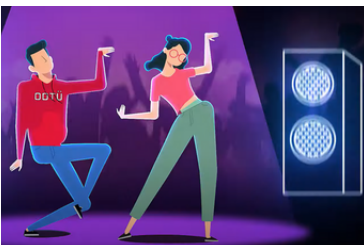


Alumni Stories

Moderator: Mehmet Auf (METU Alumni / Fenomen Prodüksiyon)

Details: Panel with METU Alumni

WEEK 14: 15 June 2022/17.40-18.30



BA100 Career Festival

Lecturers: METU Career Planning Center (ODTÜ KPM)

Details: We will have fun.